

# Dran-View<sup>6</sup>

Power Quality,  
Harmonics & Energy Software

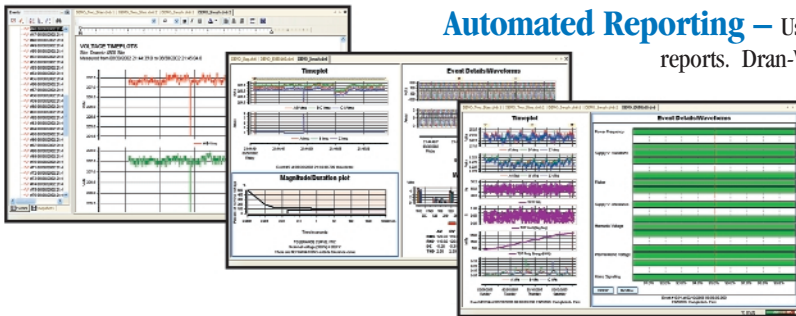
*The Industry Leading  
Power Management Software Tool*

# Dran-View<sup>6</sup>

Dran-View<sup>®</sup> 6 is a Windows-based software package that enables power professionals to simply and quickly visualize and analyze power monitoring data. It is a snap to navigate, delivers automated functionality, and incorporates powerful analytical capabilities and customizable options to meet the needs of each individual user. Dran-View is successfully used by thousands of customers around the world and has become the industry leading power management software tool.

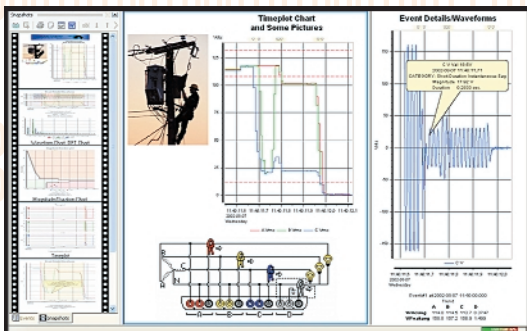
- ◆ Dran-View features an intuitive, easy-to-use interface that enhances even the first time user's experience.
- ◆ The software has been optimized for speed and to accommodate large data sets. It takes full advantage of modern operating systems and hardware, enabling users to fully utilize all available computer power.
- ◆ All measured and calculated parameters are sorted into different categories, making it easy to find and select the data you want to display. Dran-View even presents explanatory text in several languages to support graphic views.
- ◆ Scrollable (rubber band) chart axes make it easy to pan and zoom diagrams to pinpoint problems for quick resolution.
- ◆ Flexibility has been integrated throughout the package – users can customize both appearance and behavior.
- ◆ Dran-View contains unique analysis support such as the harmonic demo tool, separate harmonics scaling for voltage, current and power, and a rescue kit to correct timestamps, flip probes, adjust incorrect connection types or change scaling factors without recollecting data.
- ◆ Any data source can be exported to PQDIF format (IEEE 1159.3) and Dran-View Enterprise can even import COMTRADE files from protection relays.
- ◆ Two versions are available – one for the everyday user (Pro), the second for advanced power professionals (Enterprise).

## REPORTING

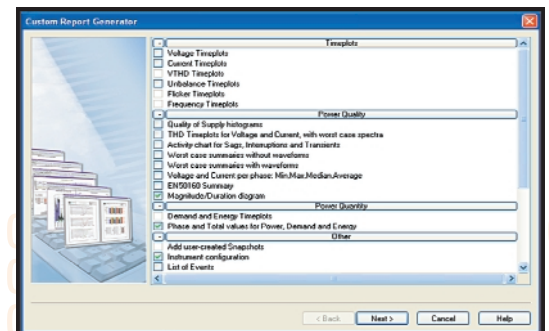


**Automated Reporting** – Using simple wizards, format data into professional easy-to-understand reports. Dran-View automatically detects the measurement mode, such as Inrush or Fault Recording, and selects the relevant graphics and reports for distribution.

**Design Custom Reports** – Choose from over 20 different reporting options and modify diagrams, data listings and standards to fit your individual reporting requirements. Options include fixed or user-selected timeplots, ITIC, worst case summaries, and more. You can even define your own standards. A single click lets you bookmark any report for future reference. ▶

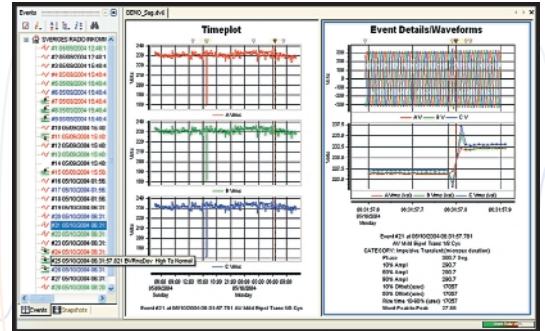
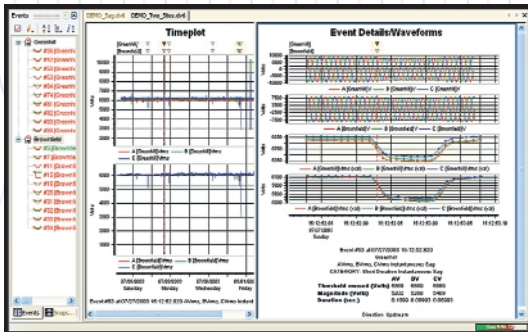


**Edit Reports** – Dran-View has a built-in text editor where you can easily insert pictures and text notations, delete events, rearrange diagrams and adjust layout. Camera function ▶ in Enterprise lets you add photos, charts and waveforms into reports.



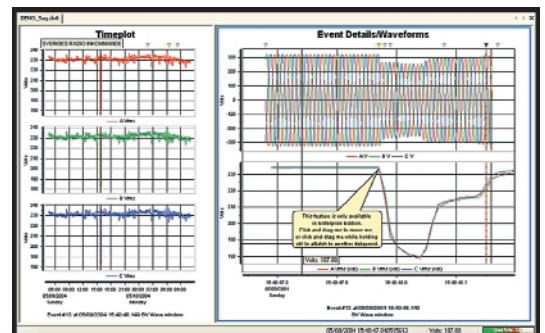
# VISUALIZATION

**Three Pane Window** – View events, timeplots and waveforms simultaneously and interactively to quickly diagnose power quality problems. Move your mouse over events to drill down for more detail or access to different channels. ▶

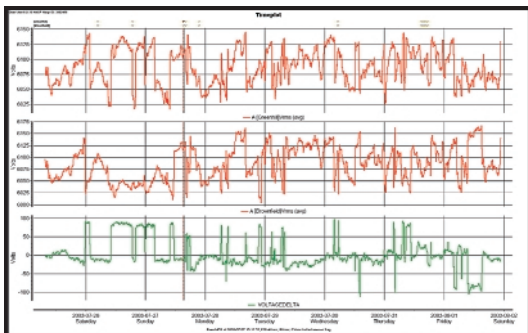


**Compare Multiple Sites** – Dran-View Enterprise allows you to simultaneously view data from many different sites or instruments, to compare data from various locations or times in the same chart. ◀

**Tailored Presentation Options** – Chart, object, area, site and other exclusive tools to help you select the most appropriate diagrams for the project. Tools such as zoom, pan, area marker, harmonic scaling, and event removal are among the more than 50 available options. ▶

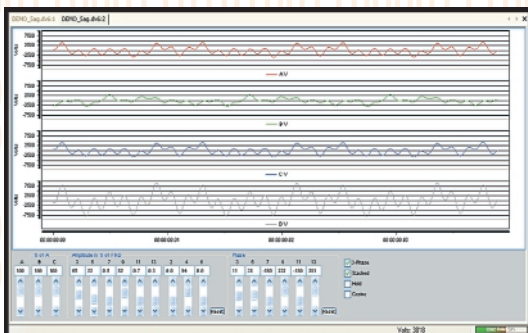
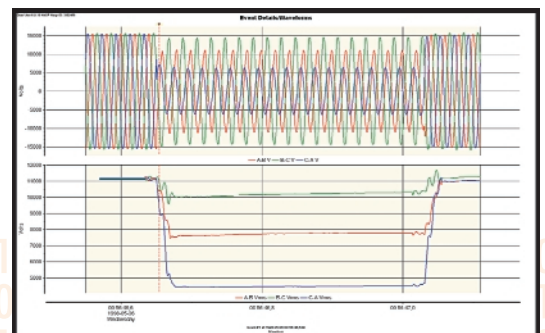


# ANALYSIS



**Events Categorized, Sorted and Grouped** – Dran-View's new workspace bar not only categorizes all power quality events, but can display data through event-data filtering, subset display, sort-order, branching, or via custom search. You can even create formulas to perform calculations between sites. ◀

**Evaluate Data from Various Formats** – Any data source can be exported to IEEE 1159.3 PQDIF format. COMTRADE files and tabulated text files with waveforms or trends can be imported into Dran-View Enterprise. ▶



**Harmonics Tools** – In addition to the unique Harmonic Demo Tool, Dran-View now includes a harmonic s/timeplot calculator used to calculate parameters such as sliding RMS, harmonics, power and symmetrical components. ◀ This tool is ideal for use during generator start-up and Inrush projects.

## DRAN-VIEW 6 PROFESSIONAL

- ◆ Simple user interface
- ◆ High speed file conversion
- ◆ Support for large data files
- ◆ Efficient file compression
- ◆ Rollable (rubberbanding) axes in diagrams, zoom, pan, etc.
- ◆ Unlimited undo / redo
- ◆ Built-in text editor
- ◆ Monitoring mode specific automatic and custom report writer
- ◆ Format templates for consistent formatting
- ◆ Timeplots / waveshape / magnitude-duration & DFT charts
- ◆ Rescue kit (repair data)
- ◆ Separate harmonic scaling for voltage, current and power
- ◆ Automatic updates via the Internet
- ◆ Compatible with Dran-View 5

## DRAN-VIEW 6 ENTERPRISE

### All that Pro has, *plus*:

- ◆ Multi-site presentation/report writing – supports presentation of many simultaneous data sets
- ◆ Multi-site mathematical formulas
- ◆ Additional advanced report writer modules
- ◆ Drag-and-drop user interface
- ◆ Customizable toolbars, menus and keyboard shortcuts
- ◆ Data removal
- ◆ Data aware text balloons in your charts
- ◆ Timeplot and harmonics calculations from waveshapes
- ◆ Images and photographs can be inserted
- ◆ Imports COMTRADE files (including data from protection relays)
- ◆ Imports PQ data from text/spreadsheet
- ◆ Snapshots to create print queues or restore program status
- ◆ Enhanced DFT features for selecting and analyzing harmonics

## INSTRUMENTS SUPPORTED

- ◆ PowerXplorer™ PX5, PX5-400, PowerGuide® 4400, PowerVisa®
- ◆ PowerPlatform® 4300 and PP1 instruments
- ◆ Dranetz-BMI 658
- ◆ Signature System® DataNodes
- ◆ Industry standard PQDIF and COMTRADE format for other instruments



**DRANETZ**  
**BMI**

**1.800.372.6832 sales@dranetz-bmi.com**

tel 732.287.3680 • fax 732.248.1834 • 1000 New Durham Road • Edison, New Jersey 08818 USA

©2005 Dranetz-BMI. All rights reserved. Printed in the United States. Specifications are subject to change without notice.

dranetz-bmi.com

